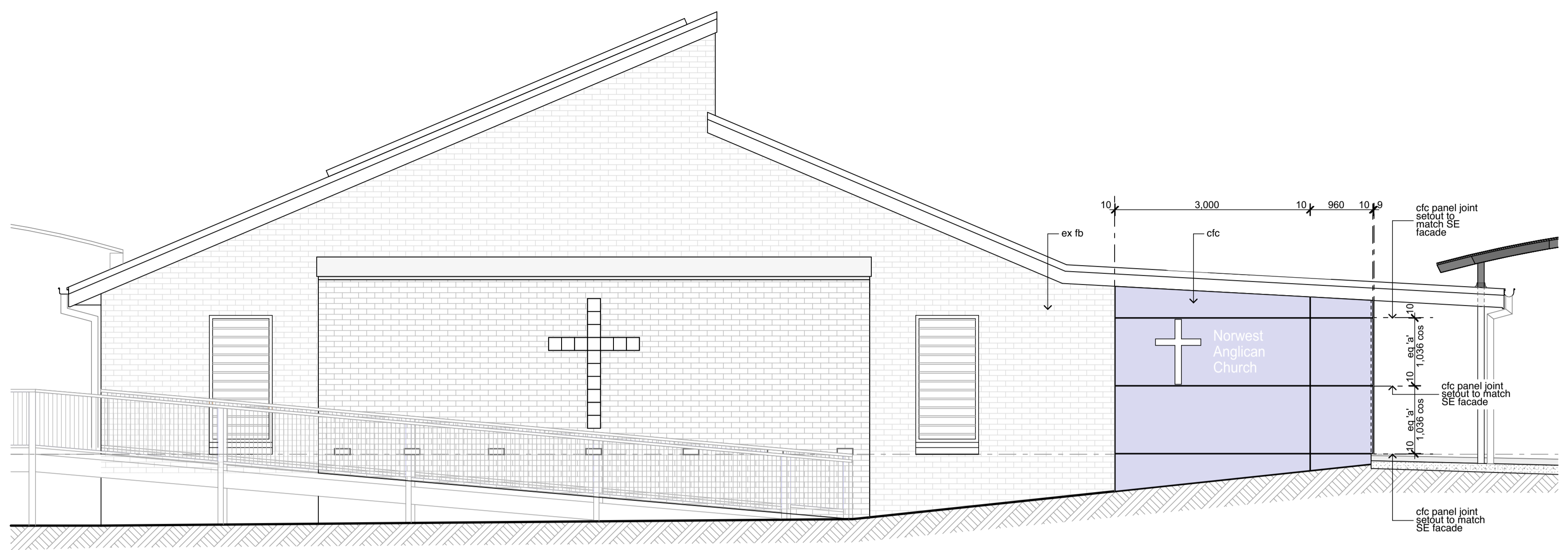
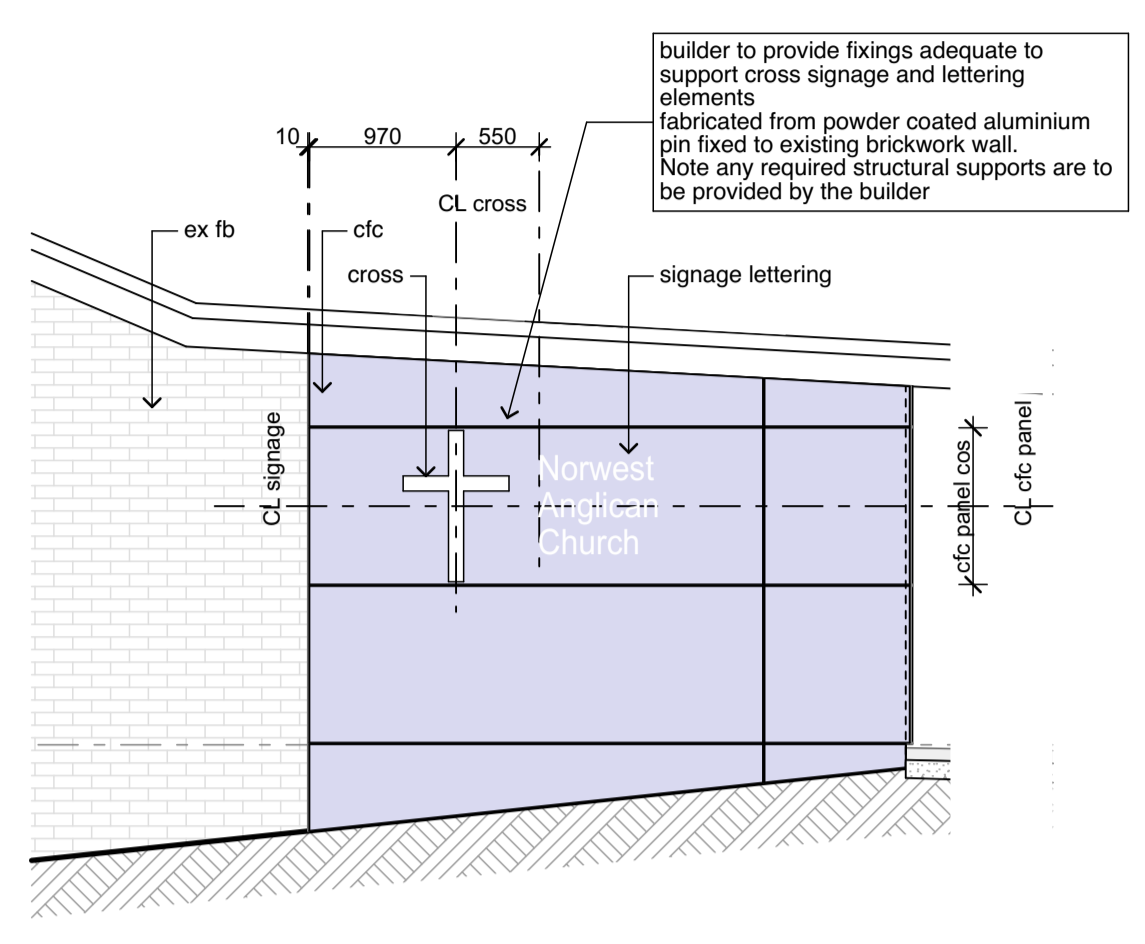


All dimensions to be verified on site and any discrepancies referred to architect for determination. figured dimensions to take precedence over scaled dimensions.
 This design including its associated drawings, images, etc. is the intellectual property of stanton dahl & associates pty limited and must not be referenced copied or used without written permission of stanton dahl & associates pty limited.

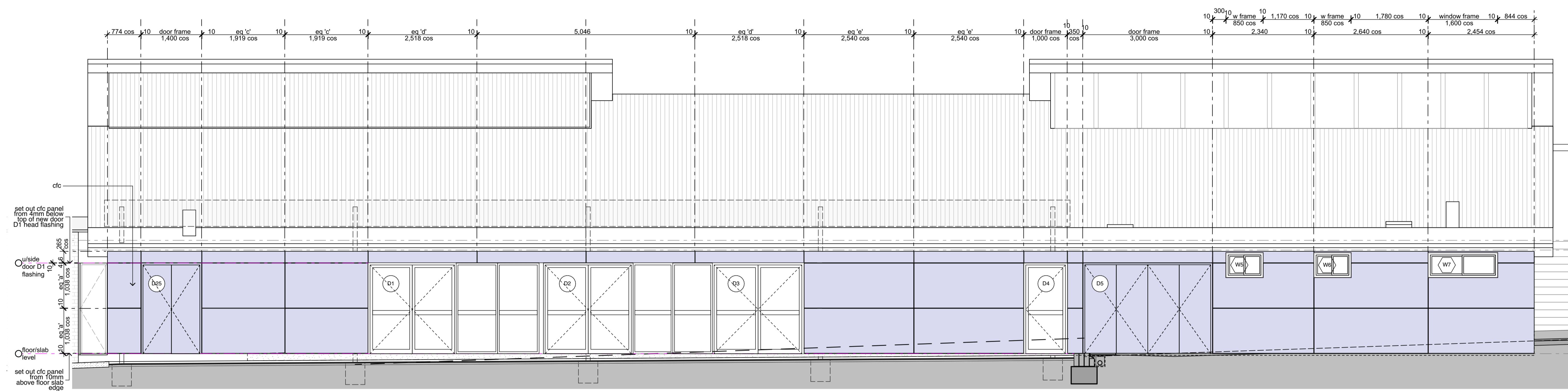
Rev	Issue	Date
A	Tender Issue	08/04/2024



1 CFC cladding setout SW elevation
 1:50



2 signage detail elevation
 1:50



3 CFC cladding setout SE elevation
 1:50

Legend (elevation & sections)
 note: drawing may not contain all items listed below

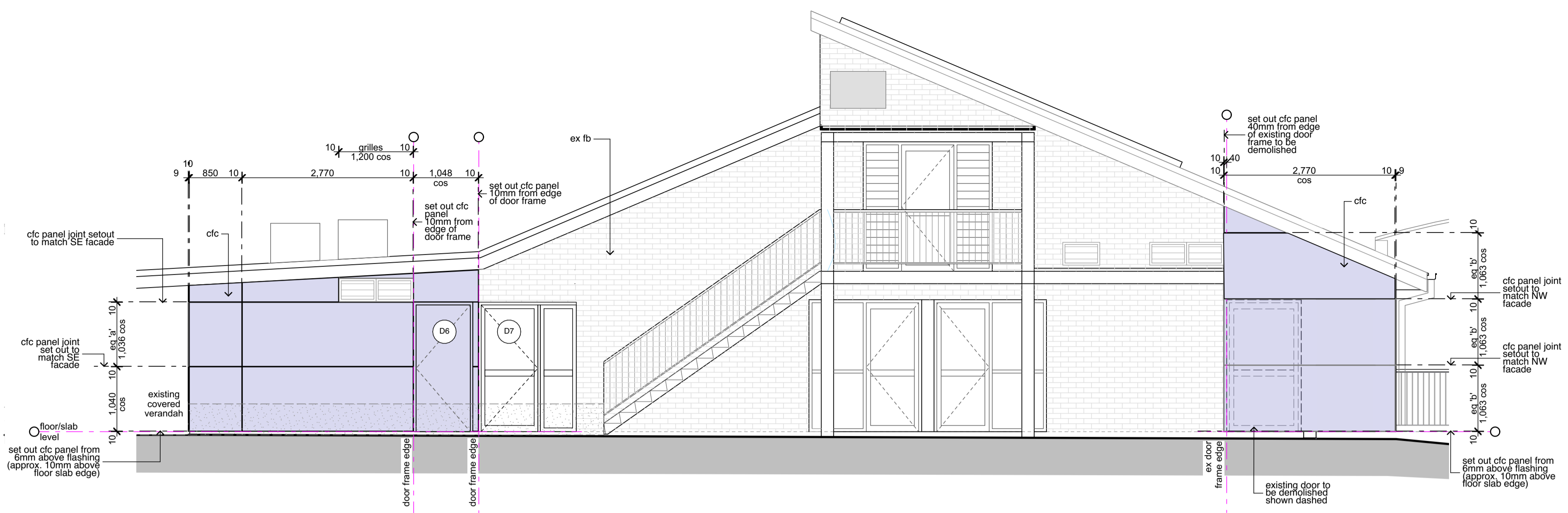
aa automatic awning	boe brick on edge	eg eaves gutter	flv fixed louvres	rs roller shutter
ac air conditioner condenser	bol(1) bollard(type)	egl existing ground line	mcl(1) metal cladding (type)	rw retaining wall
ag ag pipe	bws brickwork sill	ex existing	mdr metal deck roof	rwh rainwater head
alv adjustable louvres	cfc compressed fibre cement	f fixed sash window	nc non structural column	s sliding sash window
alw aluminium framed window	cj control joint	fb(1) face brickwork (type)	oc off form concrete	sc steel column
at acoustic tile	conc. concrete	fcl finished ceiling level	olv operable louvres	sl sliding door
bal(1) balustrade (type 1) as scheduled	cr concrete render	fl finished floor level	p(1) paint (type)	ss(1) sun shade (type)
bal(2) balustrade (type 2) as scheduled	cs coved skirting	flv fixed louvres	pap(1) perforated acoustic panel (type)	ts timber skirting
bc barge capping	dmc decorative metal screen	gl ground line	pbd plasterboard	wl wall light
bg barge gutter	dp downpipe	hr(1) handrail (type)	rc rendered concrete	
bhc brick header course	dps downpipe spreader	ip insulated panel	rms raked metal soffit	

note:
 1. all handrails, balustrades & louvres shown indicatively only. refer to detail drawings for clarity.
 2. refer to engineer's drawings for final co-ordination.
 3. acoustic panel edges at all major joints (solid line) & all exposed edges including top (adjoining s/s sill) & bottom (adjoining skirting) are to include 12x12mm aluminium angle.

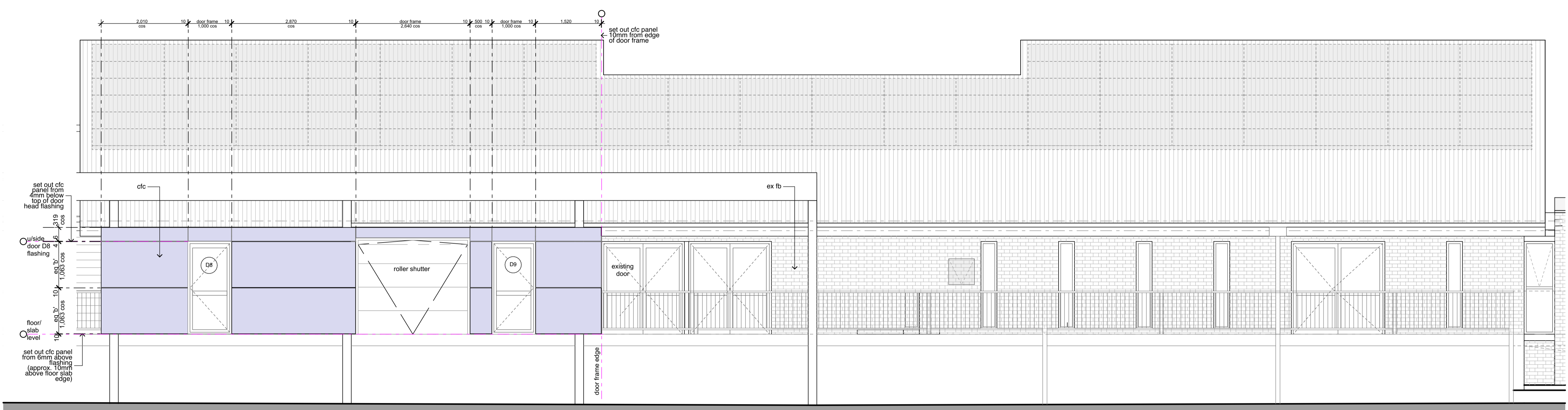


All dimensions to be verified on site and any discrepancies referred to architect for determination. figured dimensions to take precedence over scaled dimensions.
 This design including its associated drawings, images, etc. is the intellectual property of stanton dahl & associates pty limited and must not be referenced copied or used without written permission of stanton dahl & associates pty limited.

Rev	Issue	Date
A	Tender Issue	08/04/2024



1 CFC cladding setout NE elevation
 1:50



2 CFC cladding setout NW elevation
 1:50

Legend (elevation & sections)
 note: drawing may not contain all items listed below

aa automatic awning	boe brick on edge	eg eaves gutter	flv fixed louvres	rs roller shutter
ac air conditioner condenser	bol(1) bollard(type)	egl existing ground line	mcl(1) metal cladding (type)	rw retaining wall
ag ag pipe	bws brickwork sill	ex existing	mdr metal deck roof	rwh rainwater head
alv adjustable louvres	cfc compressed fibre cement	f fixed sash window	nc non structural column	s sliding sash window
alw aluminium framed window	cj control joint	fb(1) face brickwork (type)	ocf off form concrete	sc steel column
at acoustic tile	conc. concrete	fcl finished ceiling level	olv operable louvres	sl sliding door
bal(1) balustrade (type 1) as scheduled	cr concrete render	fl finished floor level	p(1) paint (type)	ss(1) sun shade (type)
bal(2) balustrade (type 2) as scheduled	cs coved skirting	flv fixed louvres	pap(1) perforated acoustic panel (type)	ts timber skirting
bc barge capping	dmc decorative metal screen	gl ground line	pbd plasterboard	wl wall light
bg box gutter	dp downpipe	hr(1) handrail (type)	rc rendered concrete	
bhc brick header course	dps downpipe spreader	ip insulated panel	rms raked metal soffit	

note:
 1. all handrails, balustrades & louvres shown indicatively only. refer to detail drawings for clarity.
 2. refer to engineer's drawings for final co-ordination.
 3. acoustic panel edges at all major joints (solid line) & all exposed edges including top (adjoining s/s sill) & bottom (adjoining skirting) are to include 12x12mm aluminium angle.



Norwest Anglican Church

Stages 2 to 4 Church Refurbishment

19 Chapel Lane,
 Baulkham Hills, NSW

Drawn: <Cad Person>
 Checked: <Designer>
 Plot date: 8/4/2024

Scale: 1:50, 1:100 as noted @ A1

Project No:
2928.23

Drawing No: **A441** Revision#: **A**

